

DETTAGLI

- Sfoderato
- 2 tasche
- 4 bottoni
- Fascette regolabili

COLORE

Z48 Blu

TESSUTO

100% poliestere
 160 g / m²

TAGLIE

XS ÷ XXL
 Regular Fit



Le misure indicate si riferiscono alle taglie **S** per i capi femminili, **L** per i capi maschili. Per i capi a taglia unica le misure indicate sono effettive.

Gilet classico da donna con vestibilità Regular Fit e sfoderato. Presenta una chiusura frontale con quattro bottoni, due tasche a filetto e fascette regolabili con fibbia sul retro.

COLORI DISPONIBILI



Z48 Blu

TABELLE TAGLIE
 E CORRISPONDENZE

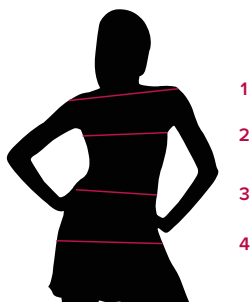
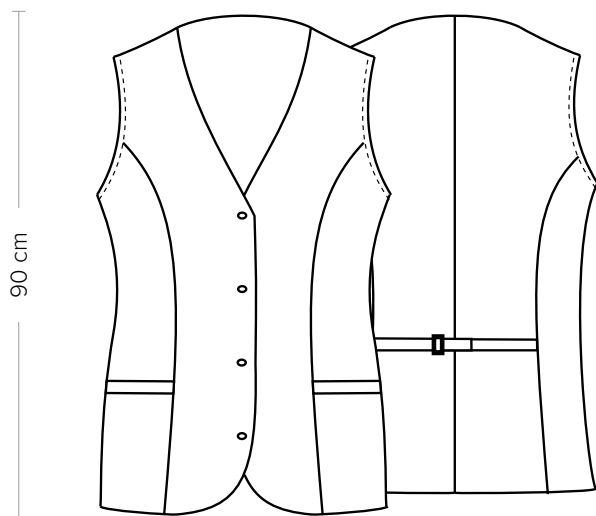


TABELLA ST-E2 REGULAR FIT						
TAGLIA	XS	S	M	L	XL	XXL
1 - SPALLE						
2 - CIRCONFERENZA TORACE	83-87	88-91	92-95	101	107	113
3 - CIRCONFERENZA VITA	75-79	80-83	84-87	88-93	94-99	100-105
4 - CIRCONFERENZA BACINO	91-95	96-99	100-103	104-109	110-115	116-121

GUIDA ALLE TAGLIE **1)** Prendere le misure anatomiche (corpo con abbigliamento intimo) senza stringere mantenendo ben teso il metro. **Nota:** nel caso vogliate indossare dei camici già con dell'abbigliamento sotto prendete le misure già abbigliati. **2)** Nel caso tra le misure prese vi fosse una misura a cavallo fra 2 taglie vi consigliamo di prendere quella più grande. **3)** Le misure della tabella sono espresse in centimetri.



DETAILS

- Unlined
- 2 pockets
- 4 buttons
- Adjustable buckle

SIZES

XS ÷ XXL
Regular Fit

COLOURS

Z48 Blue

FABRIC

100% polyester
160 g / m²



The measures indicated refer to sizes **S** for women, **L** for men. For one-size-fits-all garments, the measurements indicated are effective.

Classic women's waistcoat with Regular Fit and unlined. It features a four button front closure, two welt pockets and adjustable straps with buckle on the back.

AVAILABLE COLOURS



Z48 Blue

SIZE TABLES AND CORRESPONDENCES

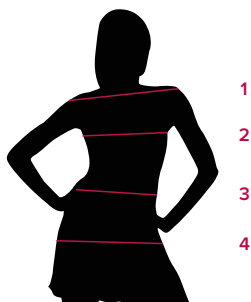


TABLE ST-E2 REGULAR FIT						
SIZE	XS	S	M	L	XL	XXL
1 - SHOULDERS						
2 - CHEST CIRCUMFERENCE	83-87	88-91	92-95	101	107	113
3 - WAIST CIRCUMFERENCE	75-79	80-83	84-87	88-93	94-99	100-105
4 - HIPS CIRCUMFERENCE	91-95	96-99	100-103	104-109	110-115	116-121

SIZE GUIDE **1)** Take the anatomical measurements (body with underwear) without tightening, keeping the measuring tape taut. Note: in case you want to wear of the gowns already with the clothing underneath take the measurements already dressed. **2)** If there is a measure between 2 sizes between the measurements taken, we advise you to take the bigger one. **3)** The measurements in the table are expressed in centimeters.